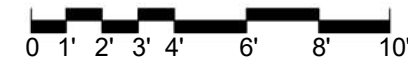


**KEY LEGEND**

- DUPLEX RECEPTACLE
- DUPLEX RECEPTACLE TOP HALF SWITCHED
- GF DUPLEX RECEPTACLE GROUND FAULT
- FLOOR DUPLEX RECEPTACLE
- R RANGE RECEPTACLE
- M MICROWAVE RECEPTACLE
- W WASHER RECEPTACLE
- D DRYER RECEPTACLE
- \* DUPLEX RECEPTACLE ABOVE COUNTER
- J JUNCTION BOX
- TD TELEPHONE-DATA OUTLET
- TV TELEVISION-DATA OUTLET
- T1 TELEPHONE OUTLET
- DB DOOR BELL-INTERIOR
- DB DOOR BELL
- RECESSED LOW VOLTAGE PANEL
- RECESSED ELECTRICAL PANEL
- S WALL SWITCH
- S<sub>3</sub> THREE-WAY SWITCH
- S<sub>3D</sub> THREE-WAY DIMMER SWITCH
- CPT. CARPET
- LVT. LUXURY VINYL TILE

**GARDNER II - UNIT 323 FLOOR PLAN**

SCALE: 3/16"=1'-0"



**SEARSTONE**  
RETIREMENT COMMUNITY

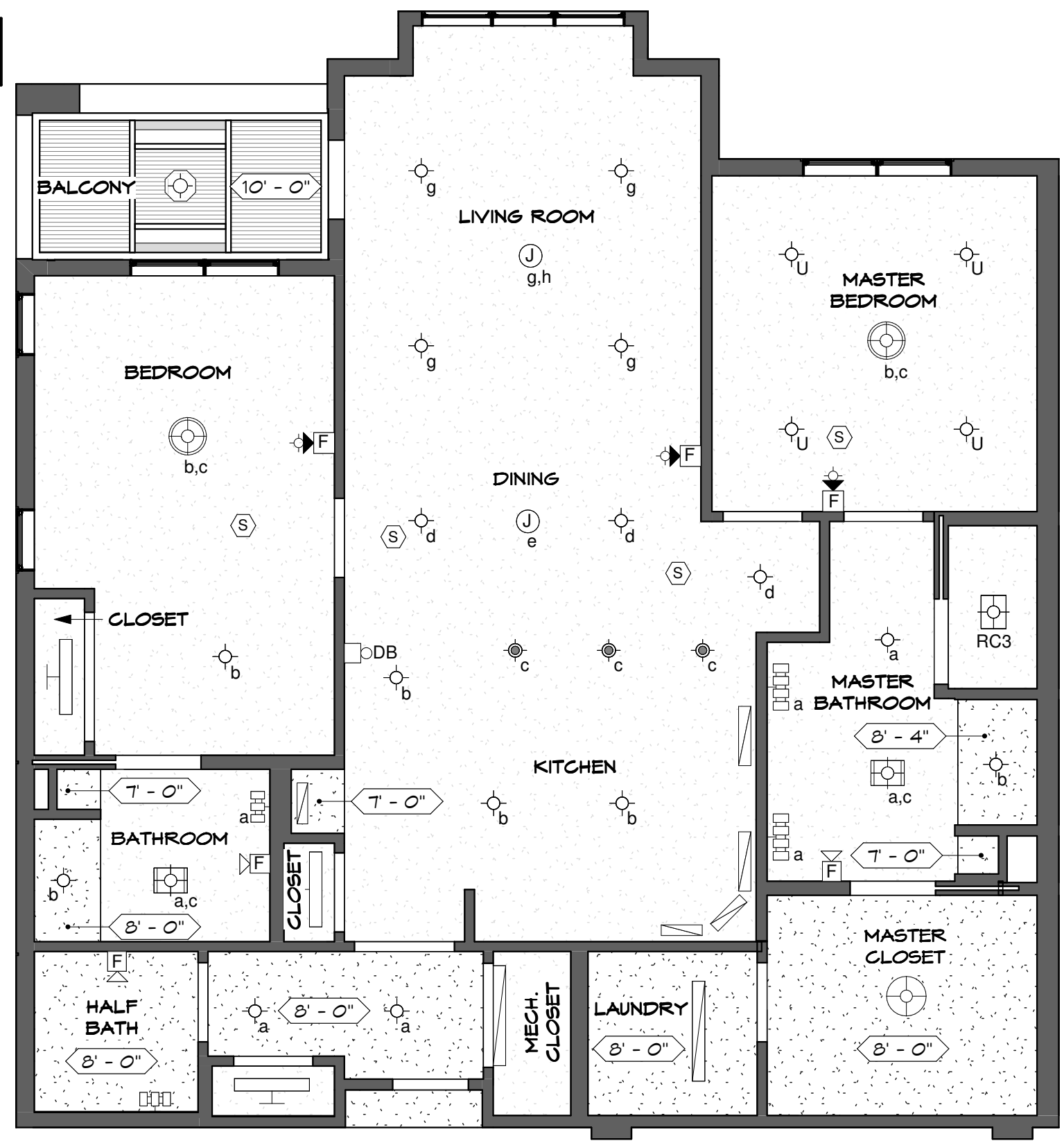
APPROVED:  
DATE:

GARDNER II

\*FLOOR PLAN  
SUBJECT TO CHANGE

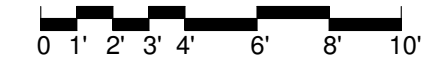
SHEET 1 OF 2

9'-6" CEILING HEIGHT UNLESS NOTED OTHERWISE



- KEY LEGEND**
- JUNCTION BOX
  - SMOKE DETECTOR
  - 4" DIAM. SHOWER LIGHT FIXTURE
  - 6" DIAM. SURFACE MOUNTED LIGHT FIXTURE
  - 6.5" DIAM. PENDANT LIGHT FIXTURE
  - 18" DIAM. PENDANT LIGHT FIXTURE
  - 19" DIAM. PENDANT LIGHT FIXTURE
  - COMBINATION LIGHT/HEATER/FAN
  - COMBINATION LIGHT/FAN
  - VANITY LIGHT BAR (3)
  - VANITY LIGHT BAR (4)
  - UNDERCABINET LIGHT FIXTURE
  - 36" TROFFER LIGHT FIXTURE
  - 48" TROFFER LIGHT FIXTURE
  - BALCONY LIGHT FIXTURE
  - UPGRADE - 6" DIAM. SURFACE MOUNTED LIGHT FIXTURE
  - FIRE ALARM AUDIO/VISUAL DEVICES
  - FIRE ALARM AUDIO DEVICE

**GARDNER II - UNIT 323** REFLECTED CEILING PLAN  
SCALE: 3/16"=1'-0"



**SEARSTONE**  
RETIREMENT COMMUNITY

APPROVED:	GARDNER II
DATE:	
*FLOOR PLAN SUBJECT TO CHANGE	SHEET 2 OF 2