

- KEY LEGEND**
- ⊖ DUPLEX RECEPTACLE
  - ⊖ TOP HALF SWITCHED
  - ⊖ GF DUPLEX RECEPTACLE GROUND FAULT
  - ⊖ FLOOR DUPLEX RECEPTACLE
  - ⊖ R RANGE RECEPTACLE
  - ⊖ M MICROWAVE RECEPTACLE
  - ⊖ W WASHER RECEPTACLE
  - ⊖ D DRYER RECEPTACLE
  - ⊖ \* DUPLEX RECEPTACLE ABOVE COUNTER
  - ⊖ J JUNCTION BOX
  - ⊖ TD TELEPHONE-DATA OUTLET
  - ⊖ TV TELEVISION-DATA OUTLET
  - ⊖ T1 TELEPHONE OUTLET
  - ⊖ DB DOOR BELL-INTERIOR
  - DB DOOR BELL
  - ▭ RECESSED LOW VOLTAGE PANEL
  - ▭ RECESSED ELECTRICAL PANEL
  - S WALL SWITCH
  - S<sub>3</sub> THREE-WAY SWITCH
  - S<sub>3D</sub> THREE-WAY DIMMER SWITCH
  - CPT. CARPET
  - LVT. LUXURY VINYL TILE

**FINLEY III - UNITS 150 & 152 FLOOR PLAN**

SCALE: 3/16"=1'-0"

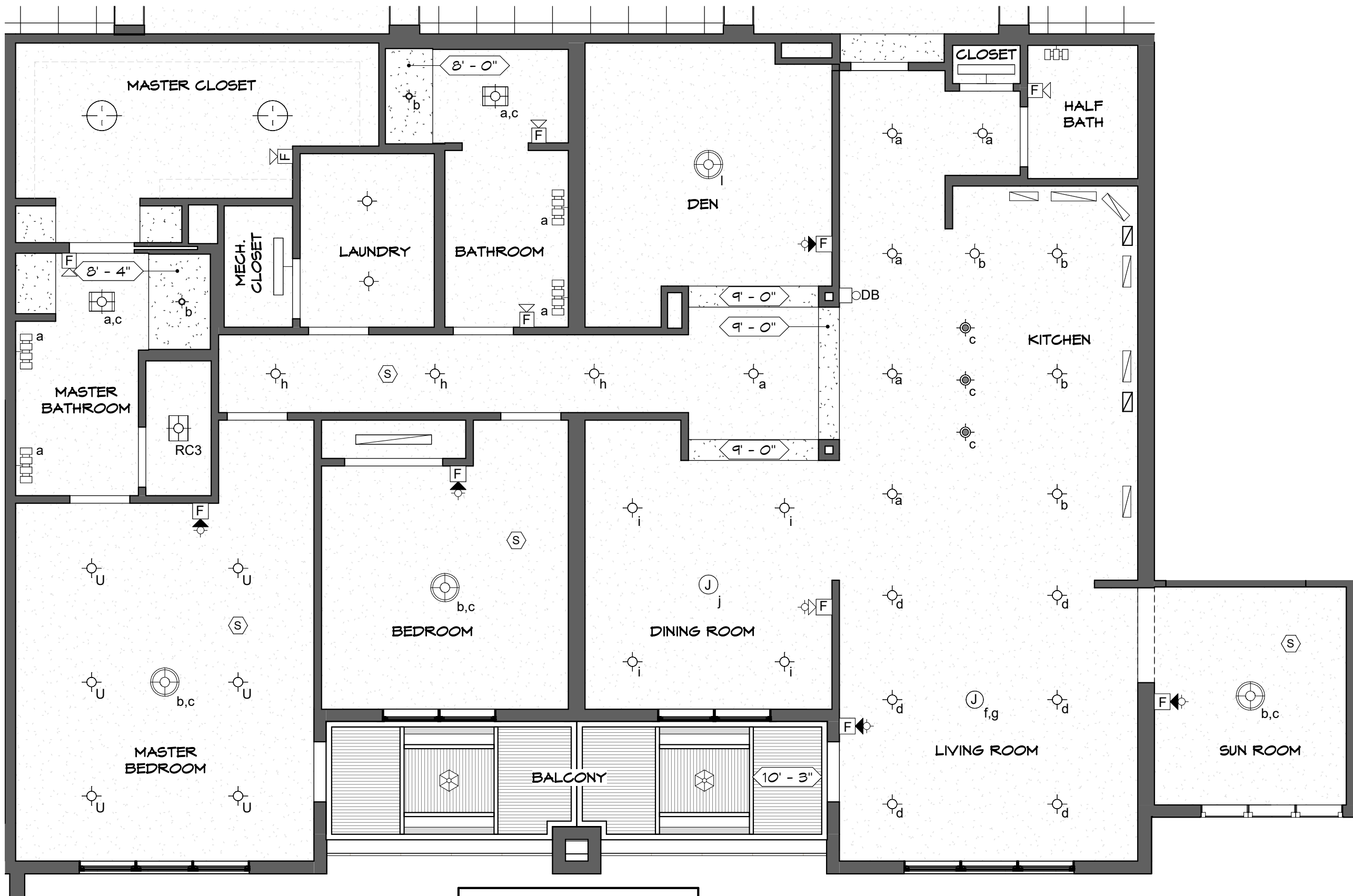


APPROVED:  
DATE:

\*FLOOR PLAN  
SUBJECT TO CHANGE

FINLEY III

SHEET 1 OF 2



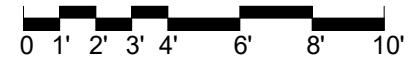
- KEY LEGEND**
- JUNCTION BOX
  - SMOKE DETECTOR
  - 4" DIAM. SHOWER LIGHT FIXTURE
  - 6" DIAM. SURFACE MOUNTED LIGHT FIXTURE
  - 19" DIAM. SURFACE MOUNTED LIGHT FIXTURE
  - 6.5" DIAM. PENDANT LIGHT FIXTURE
  - 18" DIAM. PENDANT LIGHT FIXTURE
  - 19" DIAM. PENDANT LIGHT FIXTURE
  - COMBINATION LIGHT/HEATER/FAN
  - COMBINATION LIGHT/FAN
  - VANITY LIGHT BAR (3)
  - VANITY LIGHT BAR (4)
  - UNDERCABINET LIGHT FIXTURE
  - 36" TROFFER LIGHT FIXTURE
  - 48" TROFFER LIGHT FIXTURE
  - BALCONY LIGHT FIXTURE
  - UPGRADE - 6" DIAM. SURFACE MOUNTED LIGHT FIXTURE
  - FIRE ALARM AUDIO/VISUAL DEVICES
  - FIRE ALARM AUDIO DEVICE

10'-0" CEILING HEIGHT UNLESS NOTED OTHERWISE

**FINLEY III - UNITS 150 & 152**

**REFLECTED CEILING PLAN**

SCALE: 3/16"=1'-0"



APPROVED:  
DATE:  
\*FLOOR PLAN  
SUBJECT TO CHANGE

FINLEY III  
SHEET 2 OF 2