

**KEY LEGEND**

- DUPLEX RECEPTACLE
- DUPLEX RECEPTACLE TOP HALF SWITCHED
- GF DUPLEX RECEPTACLE GROUND FAULT
- FLOOR DUPLEX RECEPTACLE
- R RANGE RECEPTACLE
- M MICROWAVE RECEPTACLE
- W WASHER RECEPTACLE
- D DRYER RECEPTACLE
- \* DUPLEX RECEPTACLE ABOVE COUNTER
- J JUNCTION BOX
- TD TELEPHONE-DATA OUTLET
- TV TELEVISION-DATA OUTLET
- T1 TELEPHONE OUTLET
- DB DOOR BELL-INTERIOR
- DB DOOR BELL
- RECESSED LOW VOLTAGE PANEL
- RECESSED ELECTRICAL PANEL
- S WALL SWITCH
- S<sub>3</sub> THREE-WAY SWITCH
- S<sub>3D</sub> THREE-WAY DIMMER SWITCH
- CPT. CARPET
- LVT. LUXURY VINYL TILE

**COLTRANE - UNIT 236 | FLOOR PLAN**

SCALE: 3/16"=1'-0"



**SEARSTONE**  
RETIREMENT COMMUNITY

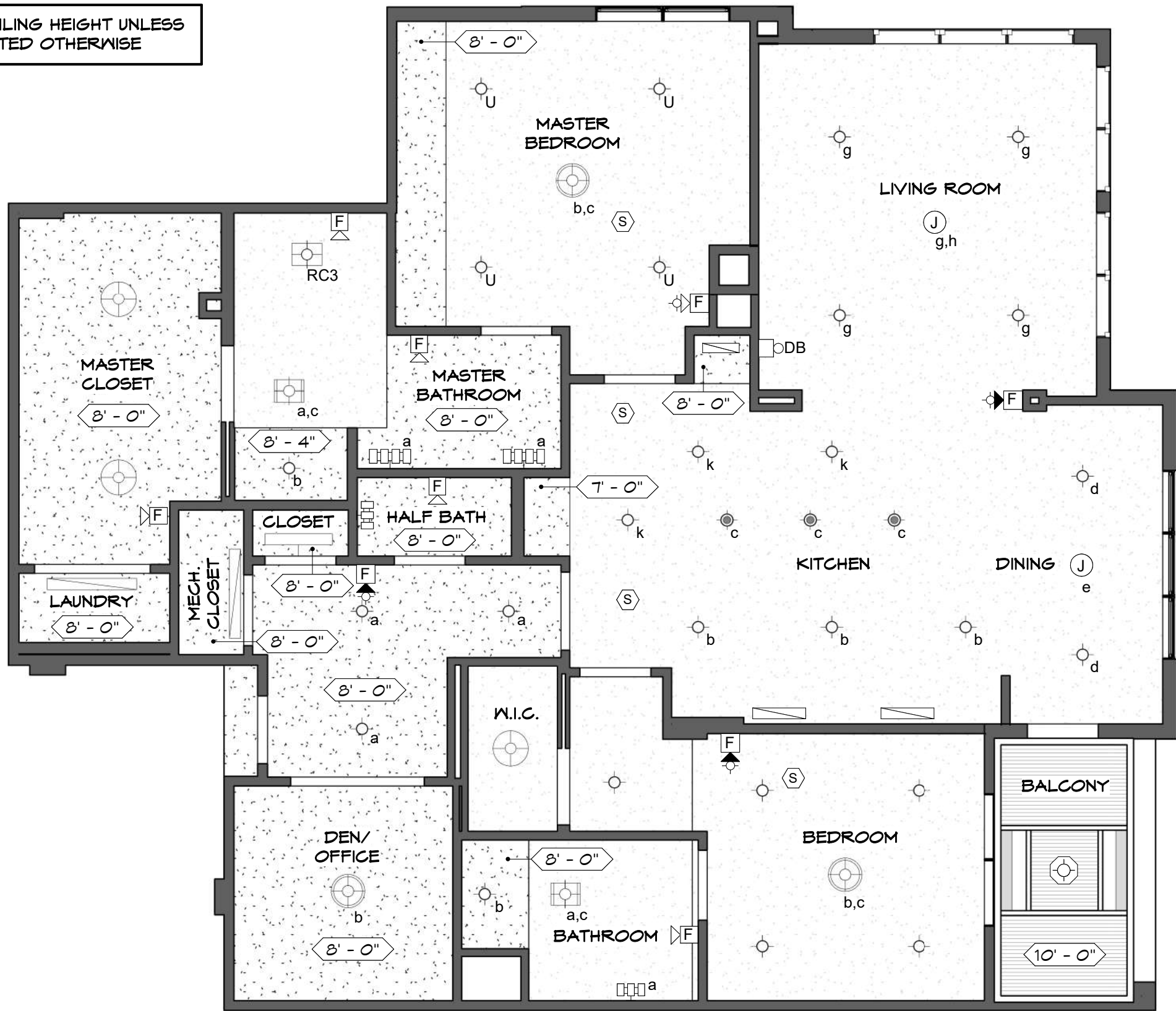
APPROVED:  
DATE:

COLTRANE













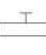





\*FLOOR PLAN  
SUBJECT TO CHANGE

SHEET 1 OF 4

9'-6" CEILING HEIGHT UNLESS NOTED OTHERWISE



**KEY LEGEND**

-  JUNCTION BOX
-  SMOKE DETECTOR
-  4" DIAM. SHOWER LIGHT FIXTURE
-  6" DIAM. SURFACE MOUNTED LIGHT FIXTURE
-  6.5" DIAM. PENDANT LIGHT FIXTURE
-  18" DIAM. PENDANT LIGHT FIXTURE
-  19" DIAM. PENDANT LIGHT FIXTURE
-  COMBINATION LIGHT/HEATER/FAN
-  COMBINATION LIGHT/FAN
-  VANITY LIGHT BAR (3)
-  VANITY LIGHT BAR (4)
-  UNDERCABINET LIGHT FIXTURE
-  36" TROFFER LIGHT FIXTURE
-  48" TROFFER LIGHT FIXTURE
-  BALCONY LIGHT FIXTURE
-  UPGRADE - 6" DIAM. SURFACE MOUNTED LIGHT FIXTURE
-  FIRE ALARM AUDIO/VISUAL DEVICES
-  FIRE ALARM AUDIO DEVICE

**COLTRANE - UNIT 236**

**REFLECTED CEILING PLAN**

SCALE: 3/16"=1'-0"



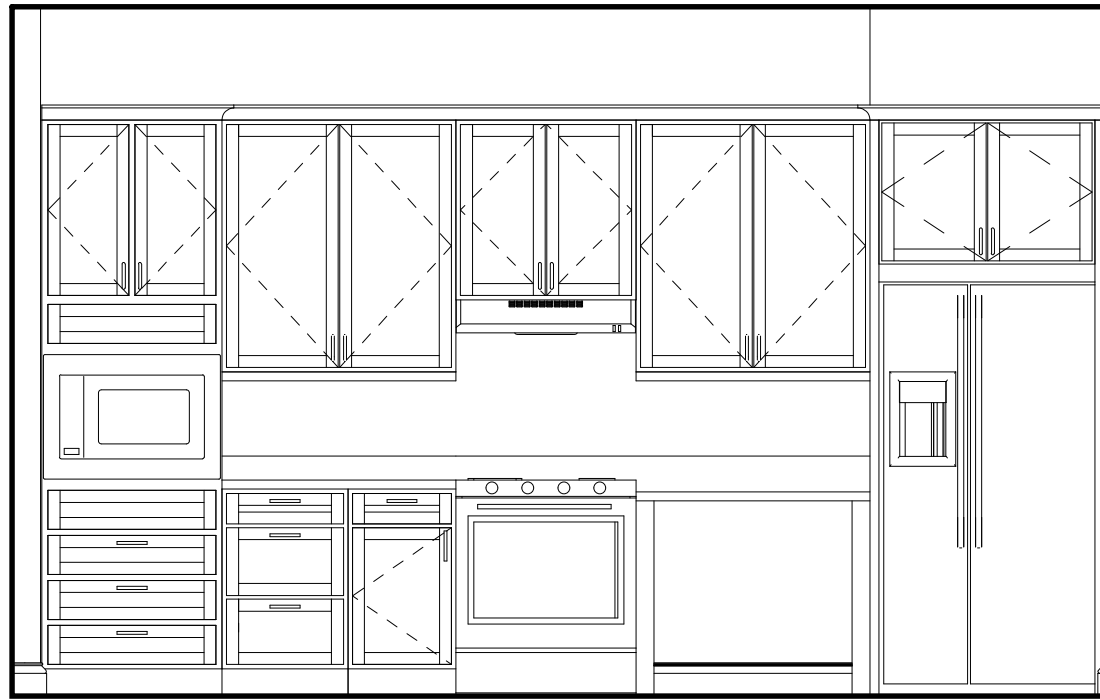
**SEARSTONE**  
RETIREMENT COMMUNITY

APPROVED:  
DATE:

COLTRANE

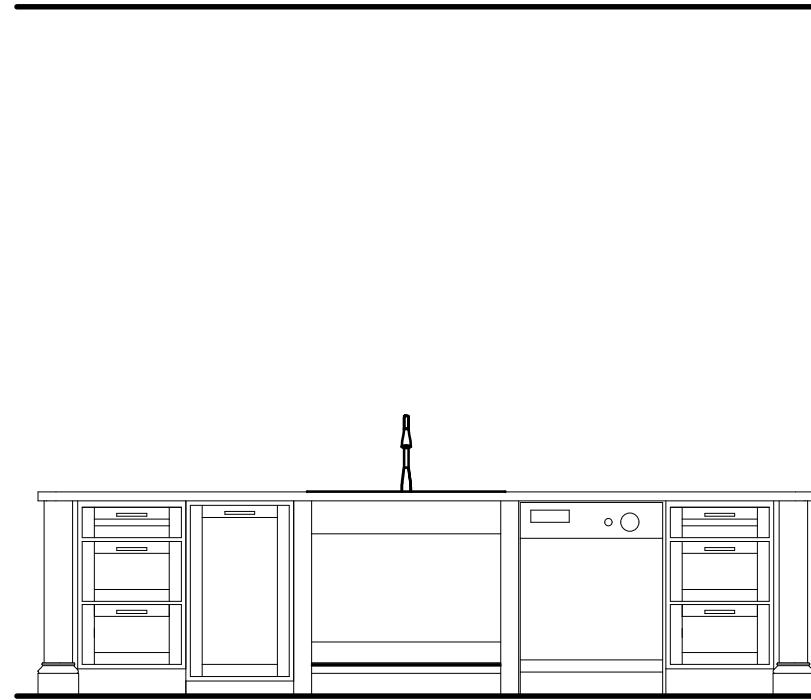
\*FLOOR PLAN  
SUBJECT TO CHANGE

SHEET 2 OF 4



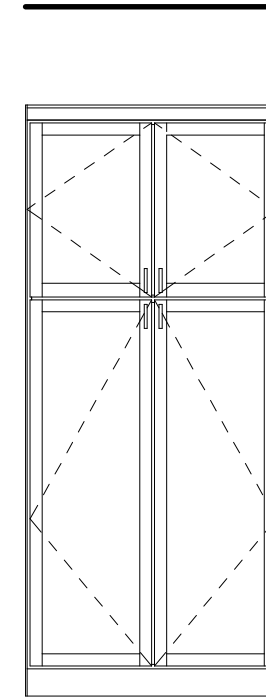
1 - KITCHEN ELEVATION

SCALE: 3/8" = 1'-0"



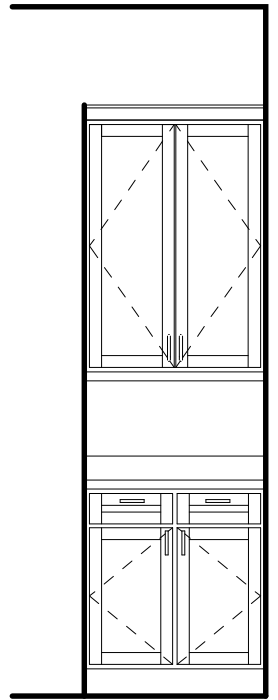
2 - KITCHEN ELEVATION

SCALE: 3/8" = 1'-0"



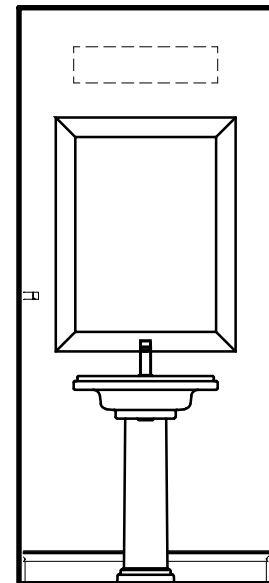
3 - KITCHEN ELEVATION

SCALE: 3/8" = 1'-0"



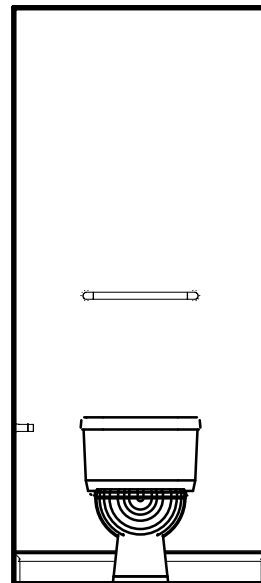
4 - KITCHEN ELEVATION

SCALE: 3/8" = 1'-0"



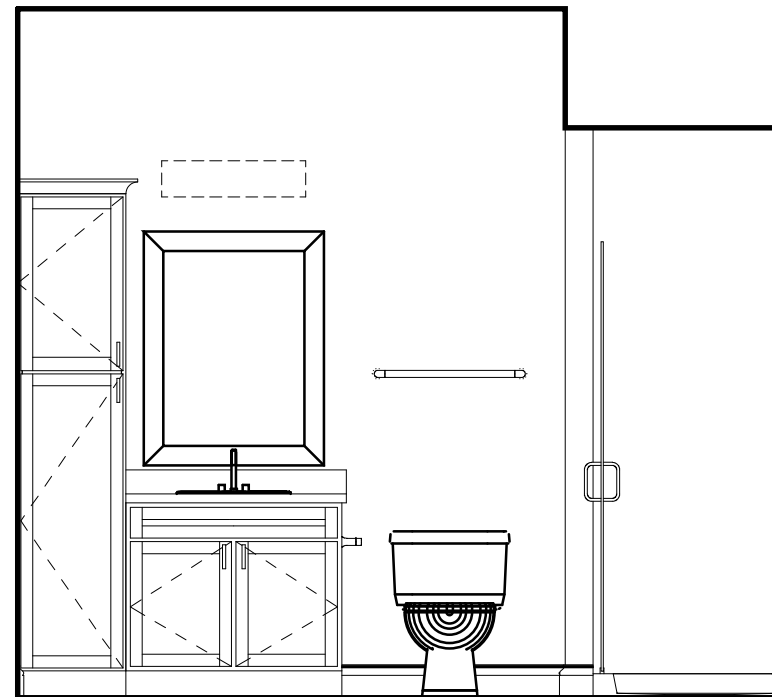
5 - BATHROOM ELEVATION

SCALE: 3/8" = 1'-0"



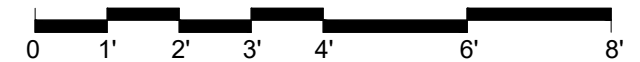
6 - BATHROOM ELEVATION

SCALE: 3/8" = 1'-0"

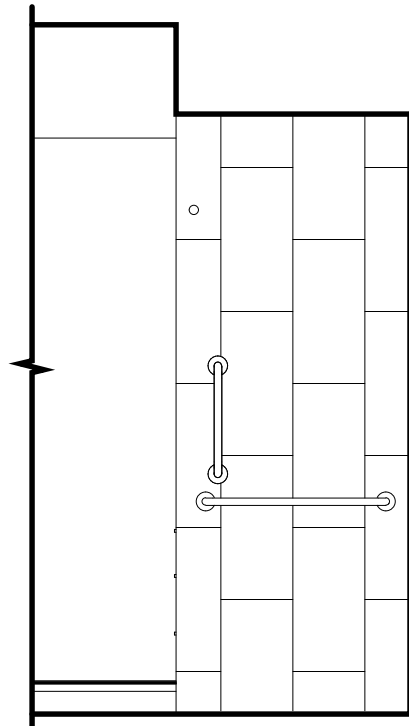


7 - BATHROOM ELEVATION

SCALE: 3/8" = 1'-0"

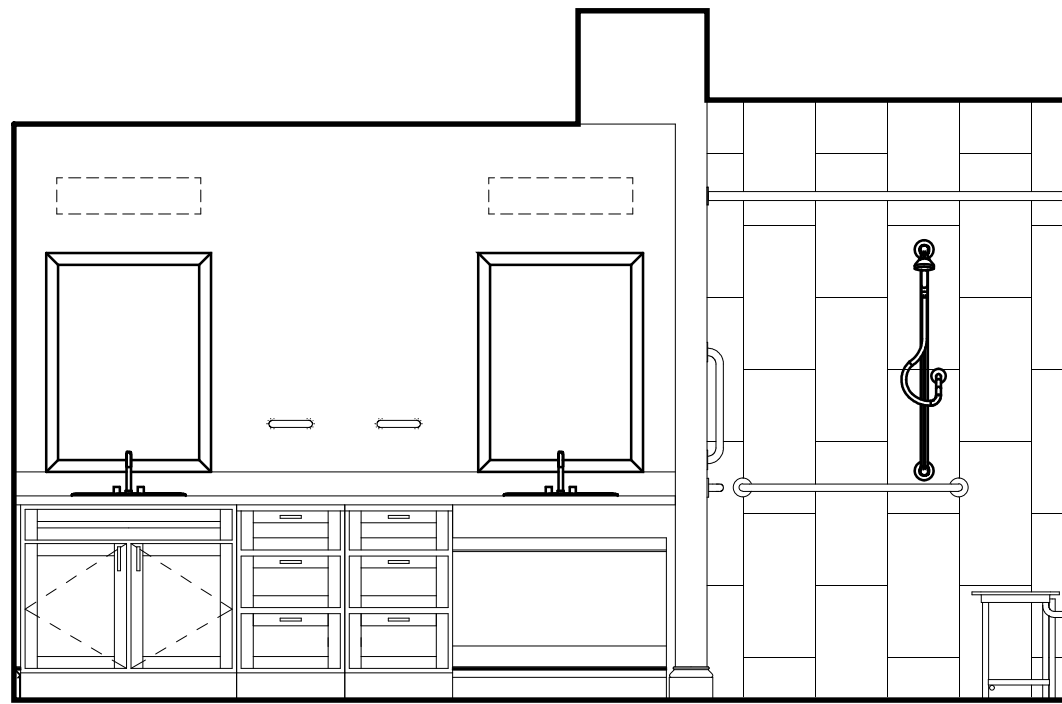


 <b>SEARSTONE</b> RETIREMENT COMMUNITY	
APPROVED: DATE:	<b>COLTRANE</b>
*FLOOR PLAN SUBJECT TO CHANGE	<b>SHEET 3 OF 4</b>



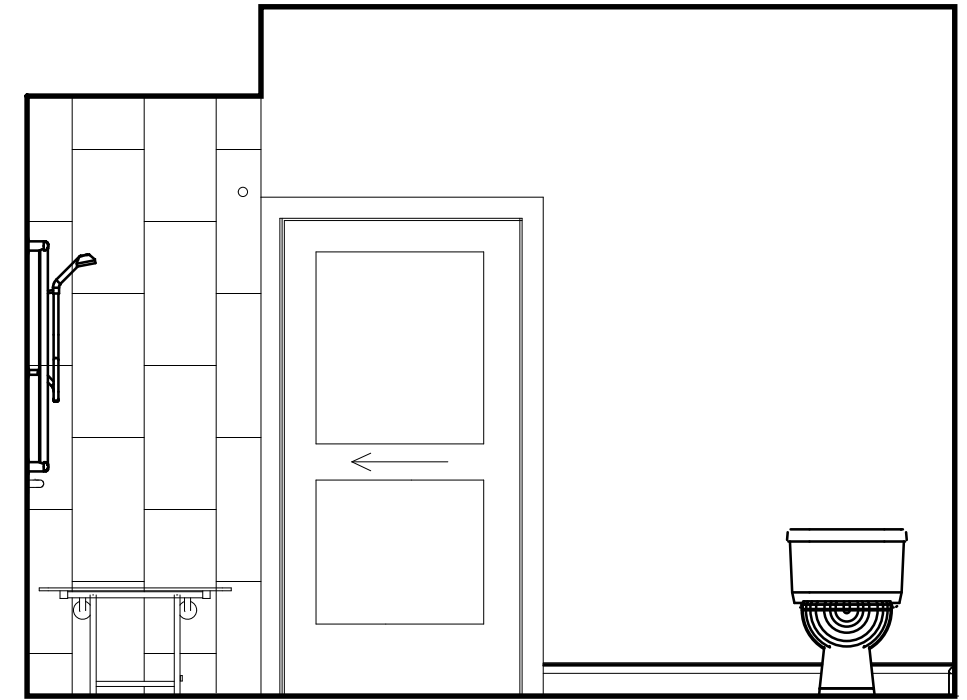
8 - BATHROOM ELEVATION

SCALE: 3/8" = 1'-0"



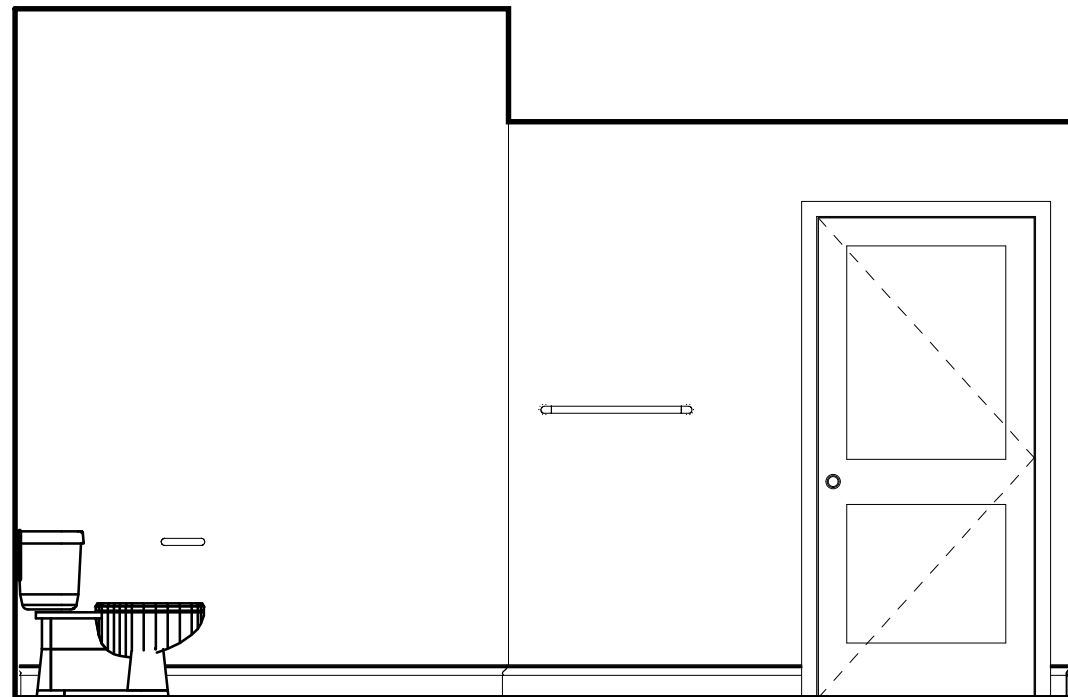
9 - BATHROOM ELEVATION

SCALE: 3/8" = 1'-0"



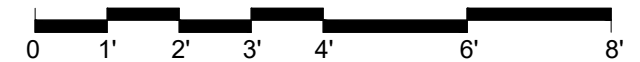
10 - BATHROOM ELEVATION


SCALE: 3/8" = 1'-0"



11 - BATHROOM ELEVATION

SCALE: 3/8" = 1'-0"



 <b>SEARSTONE</b> RETIREMENT COMMUNITY	
APPROVED: DATE:	<b>COLTRANE</b>
*FLOOR PLAN SUBJECT TO CHANGE	<b>SHEET 4 OF 4</b>