

- KEY LEGEND**
- DUPLEX RECEPTACLE
 - DUPLEX RECEPTACLE TOP HALF SWITCHED
 - GF DUPLEX RECEPTACLE GROUND FAULT
 - FLOOR DUPLEX RECEPTACLE
 - R RANGE RECEPTACLE
 - M MICROWAVE RECEPTACLE
 - W WASHER RECEPTACLE
 - D DRYER RECEPTACLE
 - *GF DUPLEX RECEPTACLE ABOVE COUNTER
 - J JUNCTION BOX
 - TD TELEPHONE-DATA OUTLET
 - TV TELEVISION-DATA OUTLET
 - T1 TELEPHONE OUTLET
 - DB DOOR BELL-INTERIOR
 - DB DOOR BELL
 - RECESSED LOW VOLTAGE PANEL
 - RECESSED ELECTRICAL PANEL
 - S WALL SWITCH
 - S₃ THREE-WAY SWITCH
 - S_{3D} THREE-WAY DIMMER SWITCH
 - CPT. CARPET
 - LVT. LUXURY VINYL TILE

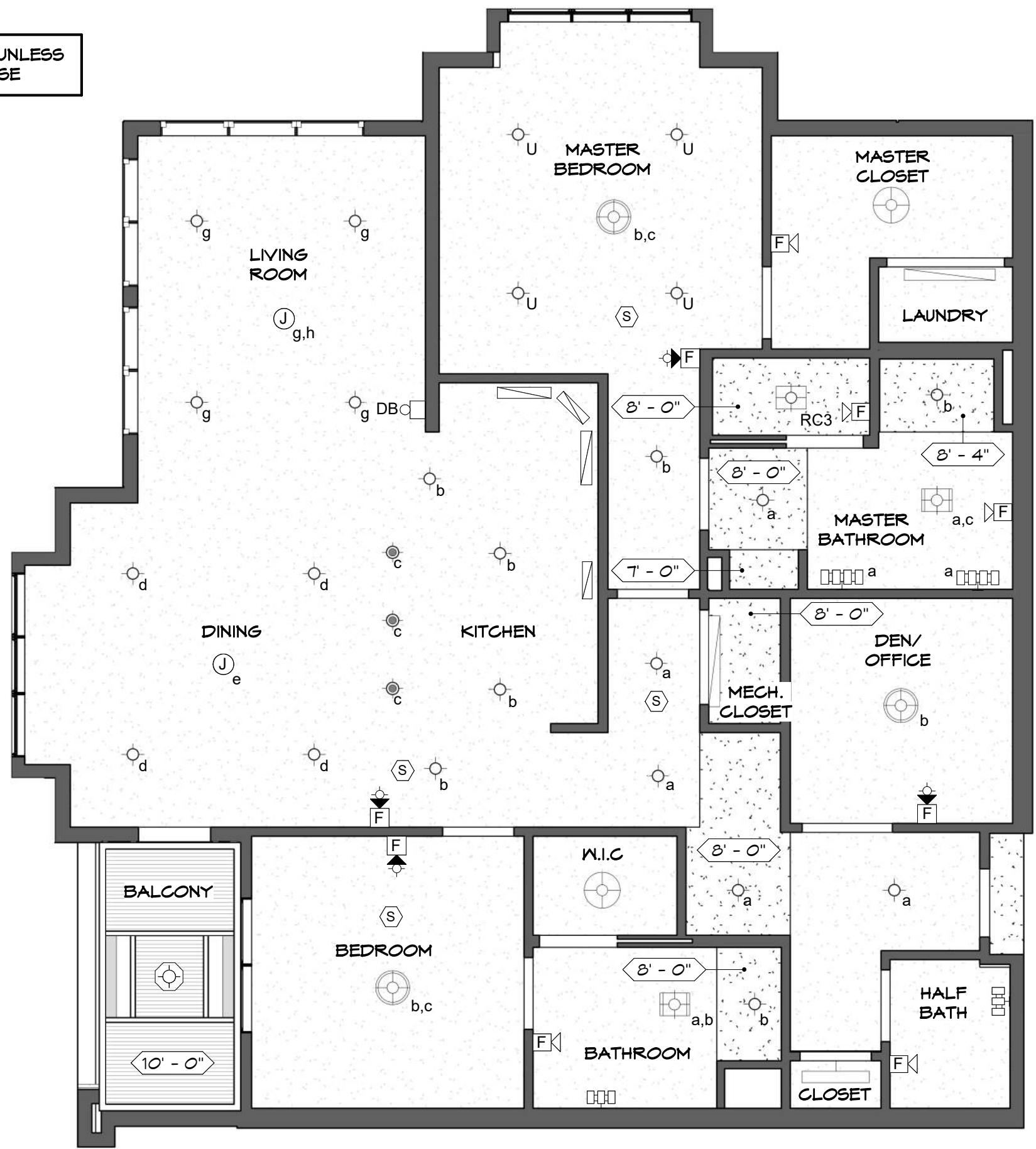
WOLFE II - UNIT 353 FLOOR PLAN
SCALE: 3/16"=1'-0"



SEARSTONE
RETIREMENT COMMUNITY

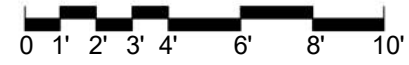
APPROVED: DATE:	WOLFE II
*FLOOR PLAN SUBJECT TO CHANGE	SHEET 1 OF 2

9'-6" CEILING HEIGHT UNLESS NOTED OTHERWISE



- KEY LEGEND**
- JUNCTION BOX
 - SMOKE DETECTOR
 - 4" DIAM. SHOWER LIGHT FIXTURE
 - 6" DIAM. SURFACE MOUNTED LIGHT FIXTURE
 - 6.5" DIAM. PENDANT LIGHT FIXTURE
 - 18" DIAM. PENDANT LIGHT FIXTURE
 - 19" DIAM. PENDANT LIGHT FIXTURE
 - COMBINATION LIGHT/HEATER/FAN
 - COMBINATION LIGHT/FAN
 - VANITY LIGHT BAR (3)
 - VANITY LIGHT BAR (4)
 - UNDERCABINET LIGHT FIXTURE
 - 36" TROFFER LIGHT FIXTURE
 - 48" TROFFER LIGHT FIXTURE
 - BALCONY LIGHT FIXTURE
 - UPGRADE - 6" DIAM. SURFACE MOUNTED LIGHT FIXTURE
 - FIRE ALARM AUDIO/VISUAL DEVICES
 - FIRE ALARM AUDIO DEVICE

WOLFE II - UNIT 353 REFLECTED CEILING PLAN
SCALE: 3/16"=1'-0"



SEARSTONE
RETIREMENT COMMUNITY

APPROVED:	WOLFE II
DATE:	
*FLOOR PLAN SUBJECT TO CHANGE	SHEET 2 OF 2