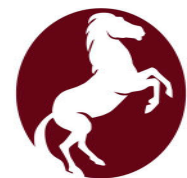
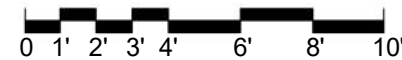


KEY LEGEND

- DUPLEX RECEPTACLE
- DUPLEX RECEPTACLE TOP HALF SWITCHED
- GF DUPLEX RECEPTACLE GROUND FAULT
- FLOOR DUPLEX RECEPTACLE
- R RANGE RECEPTACLE
- M MICROWAVE RECEPTACLE
- W WASHER RECEPTACLE
- D DRYER RECEPTACLE
- * DUPLEX RECEPTACLE ABOVE COUNTER
- J JUNCTION BOX
- TD TELEPHONE-DATA OUTLET
- TV TELEVISION-DATA OUTLET
- T1 TELEPHONE OUTLET
- DB DOOR BELL-INTERIOR
- DB DOOR BELL
- RECESSED LOW VOLTAGE PANEL
- RECESSED ELECTRICAL PANEL
- S WALL SWITCH
- S₃ THREE-WAY SWITCH
- S_{3D} THREE-WAY DIMMER SWITCH
- CPT. CARPET
- LVT. LUXURY VINYL TILE

FINLEY II - UNIT 412 | FLOOR PLAN

SCALE: 3/16"=1'-0"



SEARSTONE
RETIREMENT COMMUNITY

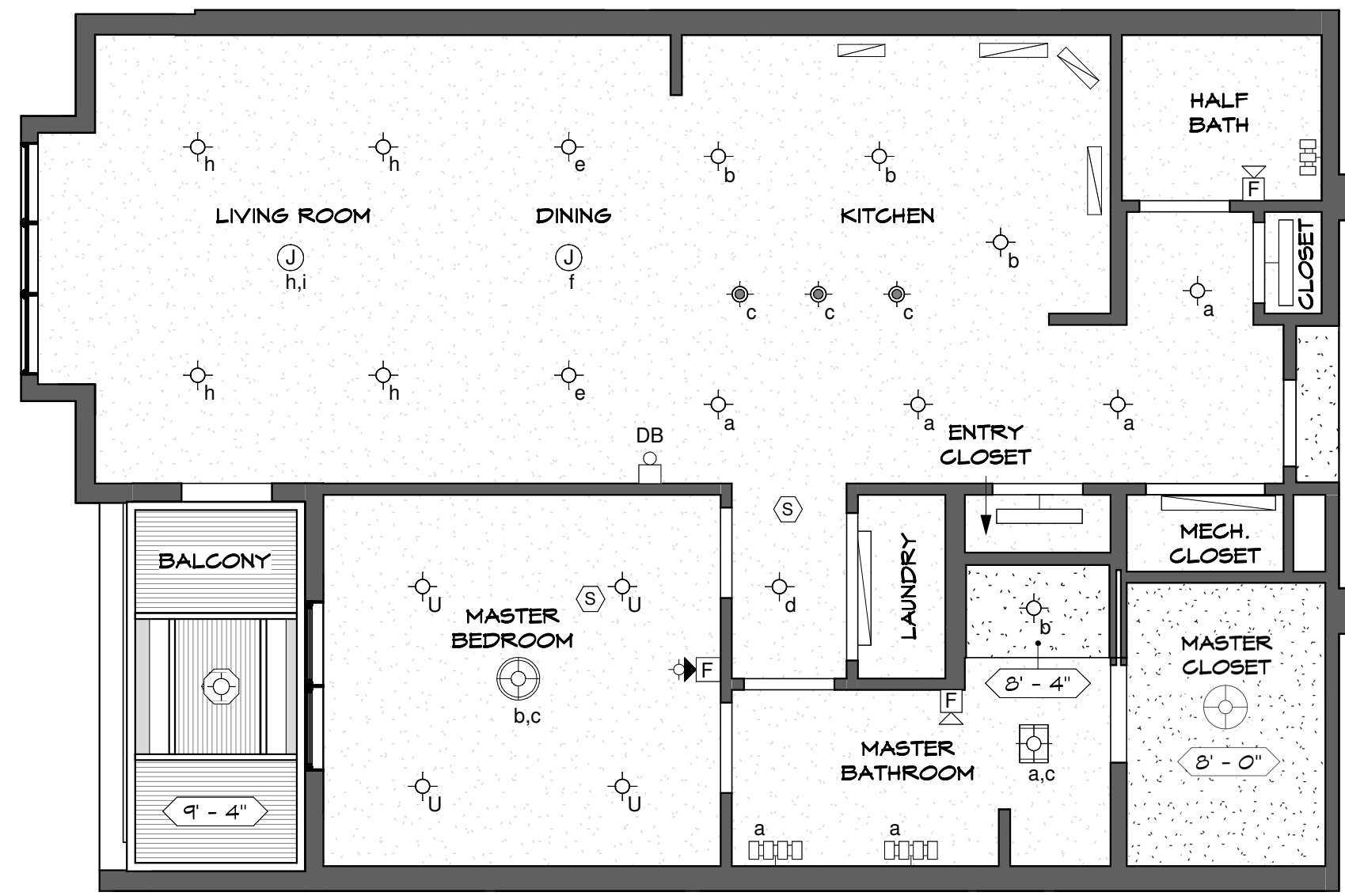
APPROVED:
DATE:

FINLEY II

*FLOOR PLAN
SUBJECT TO CHANGE

SHEET 1 OF 2

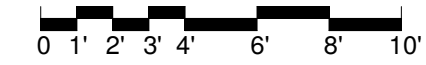
9'-5" CEILING HEIGHT UNLESS NOTED OTHERWISE



KEY LEGEND

- JUNCTION BOX
- SMOKE DETECTOR
- 4" DIAM. SHOWER LIGHT FIXTURE
- 6" DIAM. SURFACE MOUNTED LIGHT FIXTURE
- 6.5" DIAM. PENDANT LIGHT FIXTURE
- 18" DIAM. PENDANT LIGHT FIXTURE
- 19" DIAM. PENDANT LIGHT FIXTURE
- COMBINATION LIGHT/HEATER/FAN
- COMBINATION LIGHT/FAN
- VANITY LIGHT BAR (3)
- VANITY LIGHT BAR (4)
- UNDERCABINET LIGHT FIXTURE
- 36" TROFFER LIGHT FIXTURE
- 48" TROFFER LIGHT FIXTURE
- BALCONY LIGHT FIXTURE
- UPGRADE - 6" DIAM. SURFACE MOUNTED LIGHT FIXTURE
- FIRE ALARM AUDIO/VISUAL DEVICES
- FIRE ALARM AUDIO DEVICE

FINLEY II - UNIT 412 REFLECTED CEILING PLAN
SCALE: 3/16"=1'-0"





SEARSTONE
RETIREMENT COMMUNITY

APPROVED: DATE:	FINLEY II
*FLOOR PLAN SUBJECT TO CHANGE	SHEET 2 OF 2