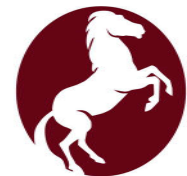


**KEY LEGEND**

- ⊖ DUPLEX RECEPTACLE
- ⊖ DUPLEX RECEPTACLE TOP HALF SWITCHED
- ⊖ GF DUPLEX RECEPTACLE GROUND FAULT
- ⊖ FLOOR DUPLEX RECEPTACLE
- ⊖ R RANGE RECEPTACLE
- ⊖ M MICROWAVE RECEPTACLE
- ⊖ W WASHER RECEPTACLE
- ⊖ D DRYER RECEPTACLE
- ⊖ \* DUPLEX RECEPTACLE ABOVE COUNTER
- ⊖ J JUNCTION BOX
- ⊖ TD TELEPHONE-DATA OUTLET
- ⊖ TV TELEVISION-DATA OUTLET
- ⊖ T1 TELEPHONE OUTLET
- ⊖ DB DOOR BELL-INTERIOR
- DB DOOR BELL
- ▭ RECESSED LOW VOLTAGE PANEL
- ▭ RECESSED ELECTRICAL PANEL
- S WALL SWITCH
- S<sub>3</sub> THREE-WAY SWITCH
- S<sub>3D</sub> THREE-WAY DIMMER SWITCH
- CPT. CARPET
- LVT. LUXURY VINYL TILE

**FINLEY - UNIT 212 FLOOR PLAN**

SCALE: 3/16"=1'-0"



**SEARSTONE**  
RETIREMENT COMMUNITY

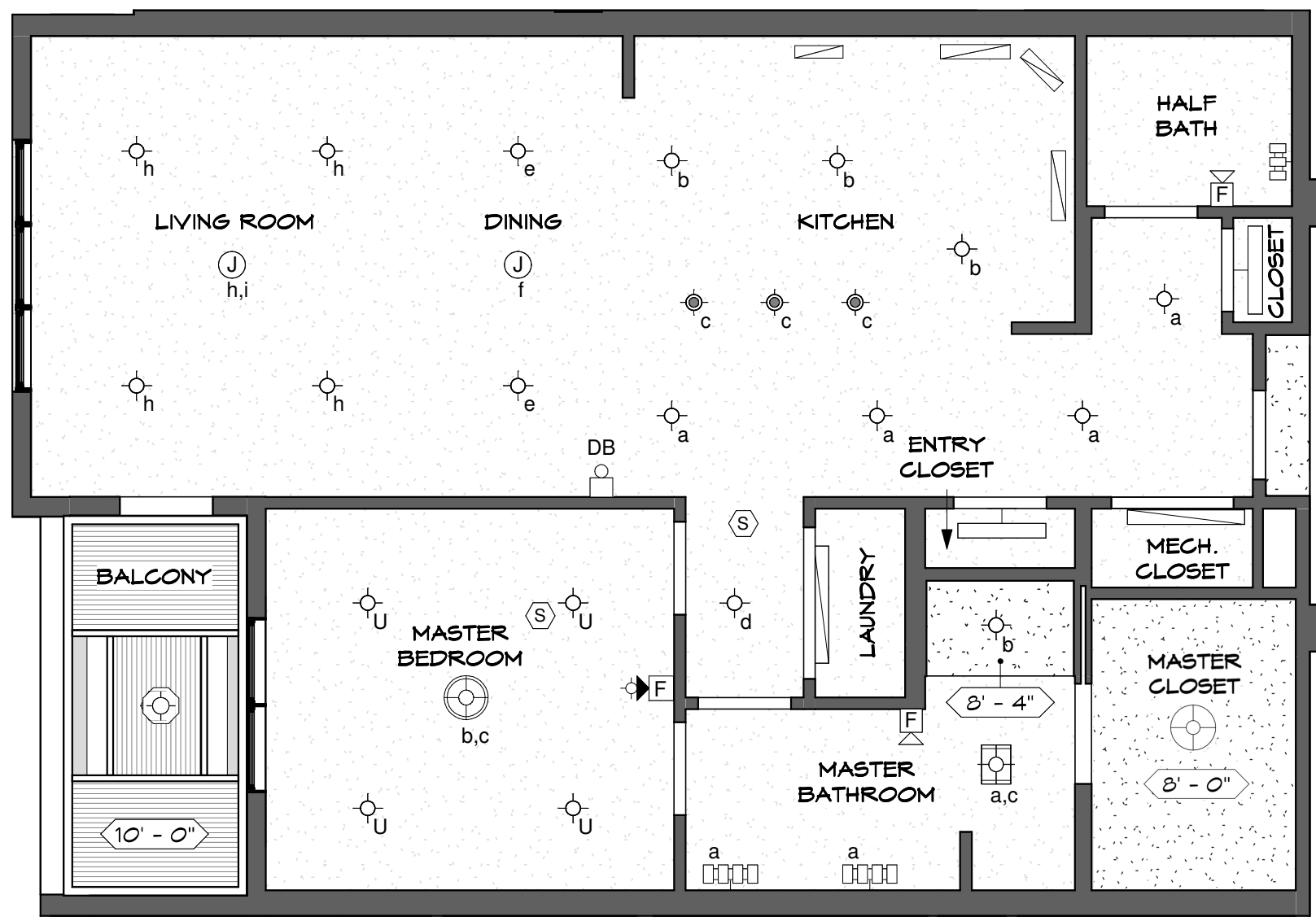
APPROVED:  
DATE:

FINLEY

\*FLOOR PLAN  
SUBJECT TO CHANGE

SHEET 1 OF 2

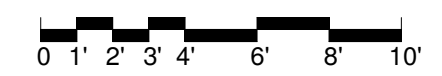
9'-6" CEILING HEIGHT UNLESS NOTED OTHERWISE



**KEY LEGEND**

- JUNCTION BOX
- SMOKE DETECTOR
- 4" DIAM. SHOWER LIGHT FIXTURE
- 6" DIAM. SURFACE MOUNTED LIGHT FIXTURE
- 6.5" DIAM. PENDANT LIGHT FIXTURE
- 18" DIAM. PENDANT LIGHT FIXTURE
- 19" DIAM. PENDANT LIGHT FIXTURE
- COMBINATION LIGHT/HEATER/FAN
- COMBINATION LIGHT/FAN
- VANITY LIGHT BAR (3)
- VANITY LIGHT BAR (4)
- UNDERCABINET LIGHT FIXTURE
- 36" TROFFER LIGHT FIXTURE
- 48" TROFFER LIGHT FIXTURE
- BALCONY LIGHT FIXTURE
- UPGRADE - 6" DIAM. SURFACE MOUNTED LIGHT FIXTURE
- FIRE ALARM AUDIO/VISUAL DEVICES
- FIRE ALARM AUDIO DEVICE

**FINLEY - UNIT 212** REFLECTED CEILING PLAN  
SCALE: 3/16"=1'-0"



**SEARSTONE**  
RETIREMENT COMMUNITY

APPROVED: DATE:	FINLEY
*FLOOR PLAN SUBJECT TO CHANGE	SHEET 2 OF 2