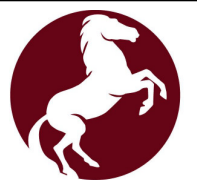
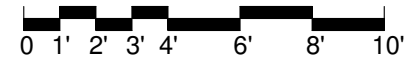


KEY LEGEND

- DUPLEX RECEPTACLE
- DUPLEX RECEPTACLE TOP HALF SWITCHED
- GF DUPLEX RECEPTACLE GROUND FAULT
- FLOOR DUPLEX RECEPTACLE
- R RANGE RECEPTACLE
- M MICROWAVE RECEPTACLE
- W WASHER RECEPTACLE
- D DRYER RECEPTACLE
- * DUPLEX RECEPTACLE ABOVE COUNTER
- J JUNCTION BOX
- TD TELEPHONE-DATA OUTLET
- TV TELEVISION-DATA OUTLET
- T1 TELEPHONE OUTLET
- DB DOOR BELL-INTERIOR
- DB DOOR BELL
- RECESSED LOW VOLTAGE PANEL
- RECESSED ELECTRICAL PANEL
- S WALL SWITCH
- S₃ THREE-WAY SWITCH
- S_{3D} THREE-WAY DIMMER SWITCH
- CPT. CARPET
- LVT. LUXURY VINYL TILE

TIMBERLAKE II - UNIT 407 | FLOOR PLAN

SCALE: 3/16"=1'-0"



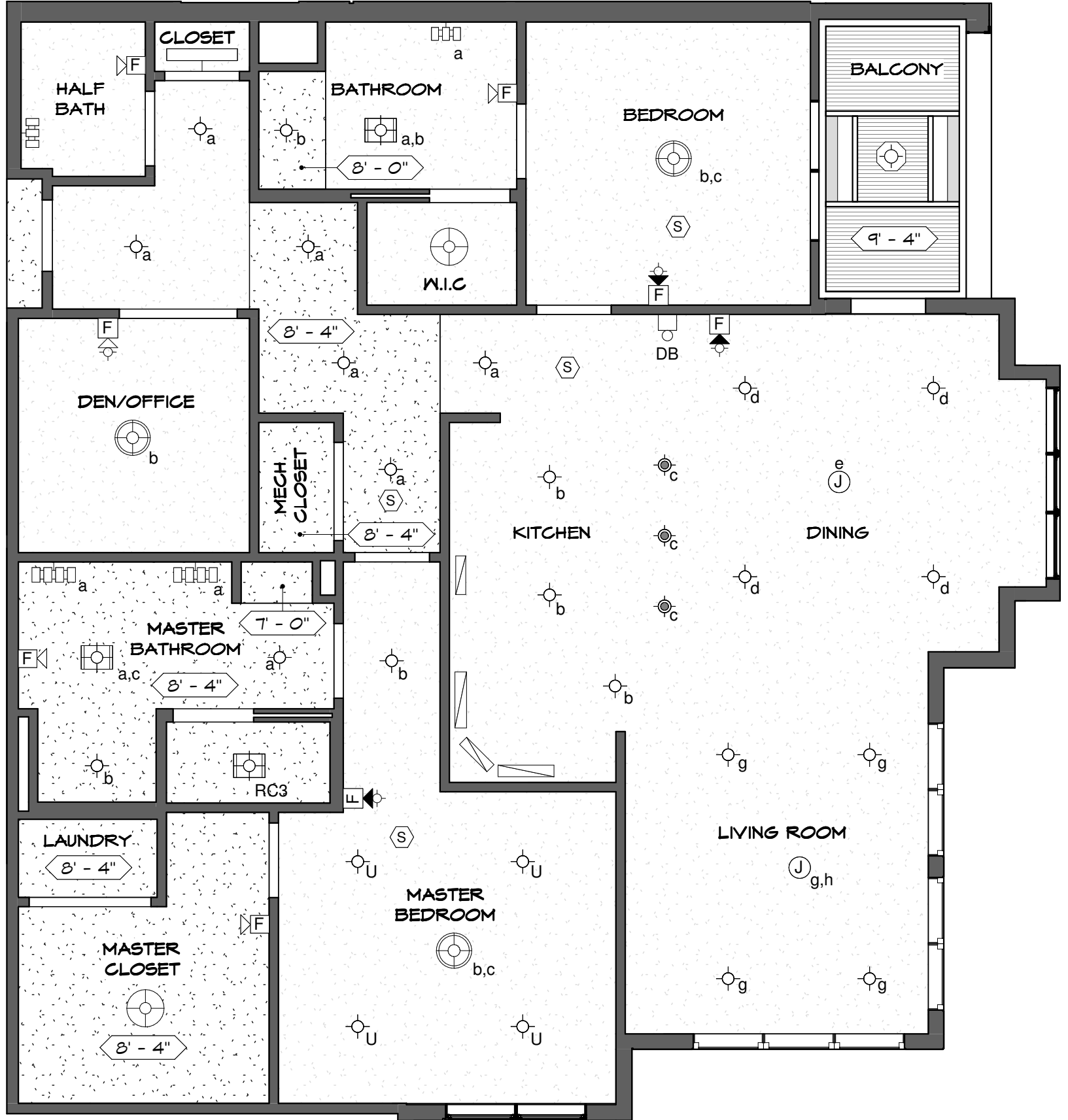
SEARSTONE
RETIREMENT COMMUNITY

APPROVED:
DATE:
*FLOOR PLAN
SUBJECT TO CHANGE

TIMBERLAKE II

SHEET 1 OF 2

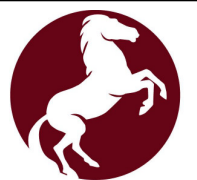
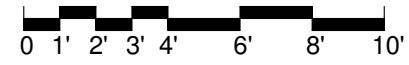
9'-5" CEILING HEIGHT UNLESS NOTED OTHERWISE



- KEY LEGEND**
- (J) JUNCTION BOX
 - (S) SMOKE DETECTOR
 - ⊙ 4" DIAM. SHOWER LIGHT FIXTURE
 - ⊙ 6" DIAM. SURFACE MOUNTED LIGHT FIXTURE
 - ⊙ 6.5" DIAM. PENDANT LIGHT FIXTURE
 - ⊙ 18" DIAM. PENDANT LIGHT FIXTURE
 - ⊙ 19" DIAM. PENDANT LIGHT FIXTURE
 - ⊙ COMBINATION LIGHT/HEATER/FAN
 - ⊙ COMBINATION LIGHT/FAN
 - ⊙ VANITY LIGHT BAR (3)
 - ⊙ VANITY LIGHT BAR (4)
 - ▬ UNDERCABINET LIGHT FIXTURE
 - ▬ 36" TROFFER LIGHT FIXTURE
 - ▬ 48" TROFFER LIGHT FIXTURE
 - ⊙ BALCONY LIGHT FIXTURE
 - ⊙ UPGRADE - 6" DIAM. SURFACE MOUNTED LIGHT FIXTURE
 - ⊙ FIRE ALARM AUDIO/VISUAL DEVICES
 - ⊙ FIRE ALARM AUDIO DEVICE

TIMBERLAKE II - UNIT 407 REFLECTED CEILING PLAN

SCALE: 3/16"=1'-0"



SEARSTONE
RETIREMENT COMMUNITY

APPROVED:
DATE:
*FLOOR PLAN
SUBJECT TO CHANGE

TIMBERLAKE II

SHEET 2 OF 2