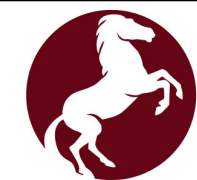
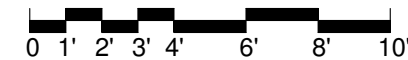


KEY LEGEND

- ⊖ DUPLEX RECEPTACLE
- ⊖ DUPLEX RECEPTACLE TOP HALF SWITCHED
- ⊖ GF DUPLEX RECEPTACLE GROUND FAULT
- ⊖ FLOOR DUPLEX RECEPTACLE
- ⊖ R RANGE RECEPTACLE
- ⊖ M MICROWAVE RECEPTACLE
- ⊖ W WASHER RECEPTACLE
- ⊖ D DRYER RECEPTACLE
- ⊖ * DUPLEX RECEPTACLE ABOVE COUNTER
- ⊖ J JUNCTION BOX
- ⊖ TD TELEPHONE-DATA OUTLET
- ⊖ TV TELEVISION-DATA OUTLET
- ⊖ T1 TELEPHONE OUTLET
- ⊖ DB DOOR BELL-INTERIOR
- DB DOOR BELL
- ▭ RECESSED LOW VOLTAGE PANEL
- ▭ RECESSED ELECTRICAL PANEL
- S WALL SWITCH
- S₃ THREE-WAY SWITCH
- S_{3D} THREE-WAY DIMMER SWITCH
- CPT. CARPET
- LVT. LUXURY VINYL TILE

DEMILLE - UNIT 117 FLOOR PLAN

SCALE: 3/16"=1'-0"



SEARSTONE
RETIREMENT COMMUNITY

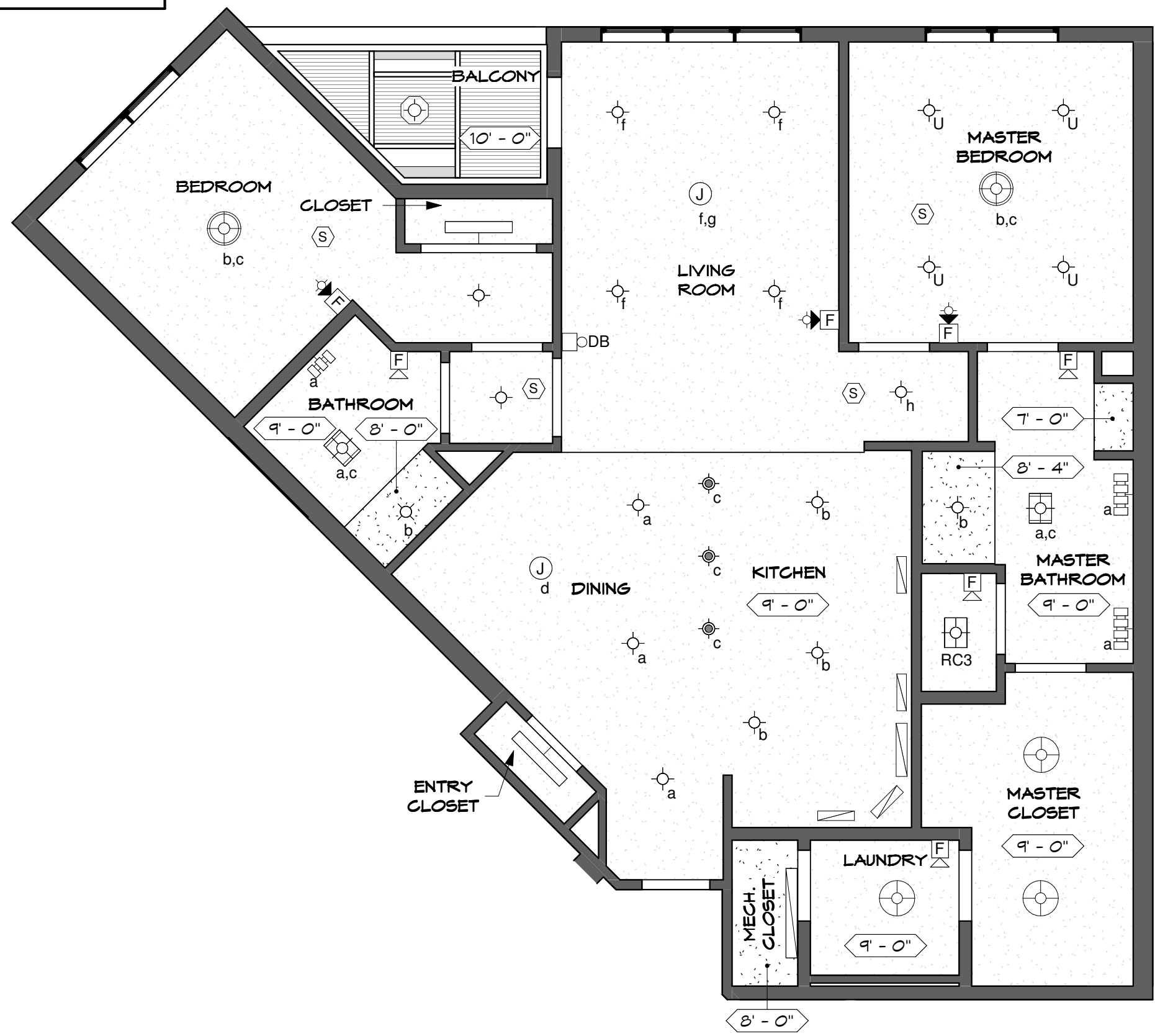
APPROVED:
DATE:

DEMILLE

*FLOOR PLAN
SUBJECT TO CHANGE

SHEET 1 OF 2

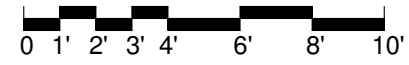
10'-4" CEILING HEIGHT UNLESS NOTED OTHERWISE



- KEY LEGEND**
- ⓐ JUNCTION BOX
 - Ⓢ SMOKE DETECTOR
 - ⊙ 4" DIAM. SHOWER LIGHT FIXTURE
 - ⊙ 6" DIAM. SURFACE MOUNTED LIGHT FIXTURE
 - ⊙ 6.5" DIAM. PENDANT LIGHT FIXTURE
 - ⊙ 18" DIAM. PENDANT LIGHT FIXTURE
 - ⊙ 19" DIAM. PENDANT LIGHT FIXTURE
 - ⊙ COMBINATION LIGHT/HEATER/FAN
 - ⊙ COMBINATION LIGHT/FAN
 - ⊙ VANITY LIGHT BAR (3)
 - ⊙ VANITY LIGHT BAR (4)
 - ▭ UNDERCABINET LIGHT FIXTURE
 - ▭ 36" TROFFER LIGHT FIXTURE
 - ▭ 48" TROFFER LIGHT FIXTURE
 - ⊙ BALCONY LIGHT FIXTURE
 - ⊙ UPGRADE - 6" DIAM. SURFACE MOUNTED LIGHT FIXTURE
 - Ⓢ FIRE ALARM AUDIO/VISUAL DEVICES
 - Ⓢ FIRE ALARM AUDIO DEVICE

DEMILLE - UNIT 117 REFLECTED CEILING PLAN

SCALE: 3/16"=1'-0"



SEARSTONE
RETIREMENT COMMUNITY

APPROVED: DATE:	DEMILLE
*FLOOR PLAN SUBJECT TO CHANGE	SHEET 2 OF 2