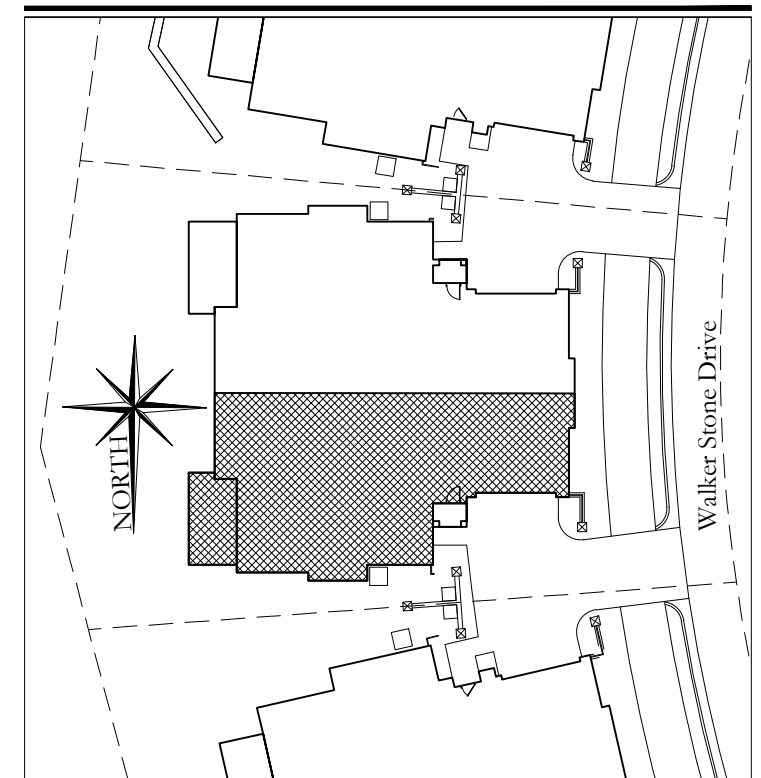


Please note: These plans are a visual aid intended to show layout and approximate dimensions, based on permitted drawings. Field conditions during the construction process may require slight adjustment to plans.

KEY PLAN



LEGEND

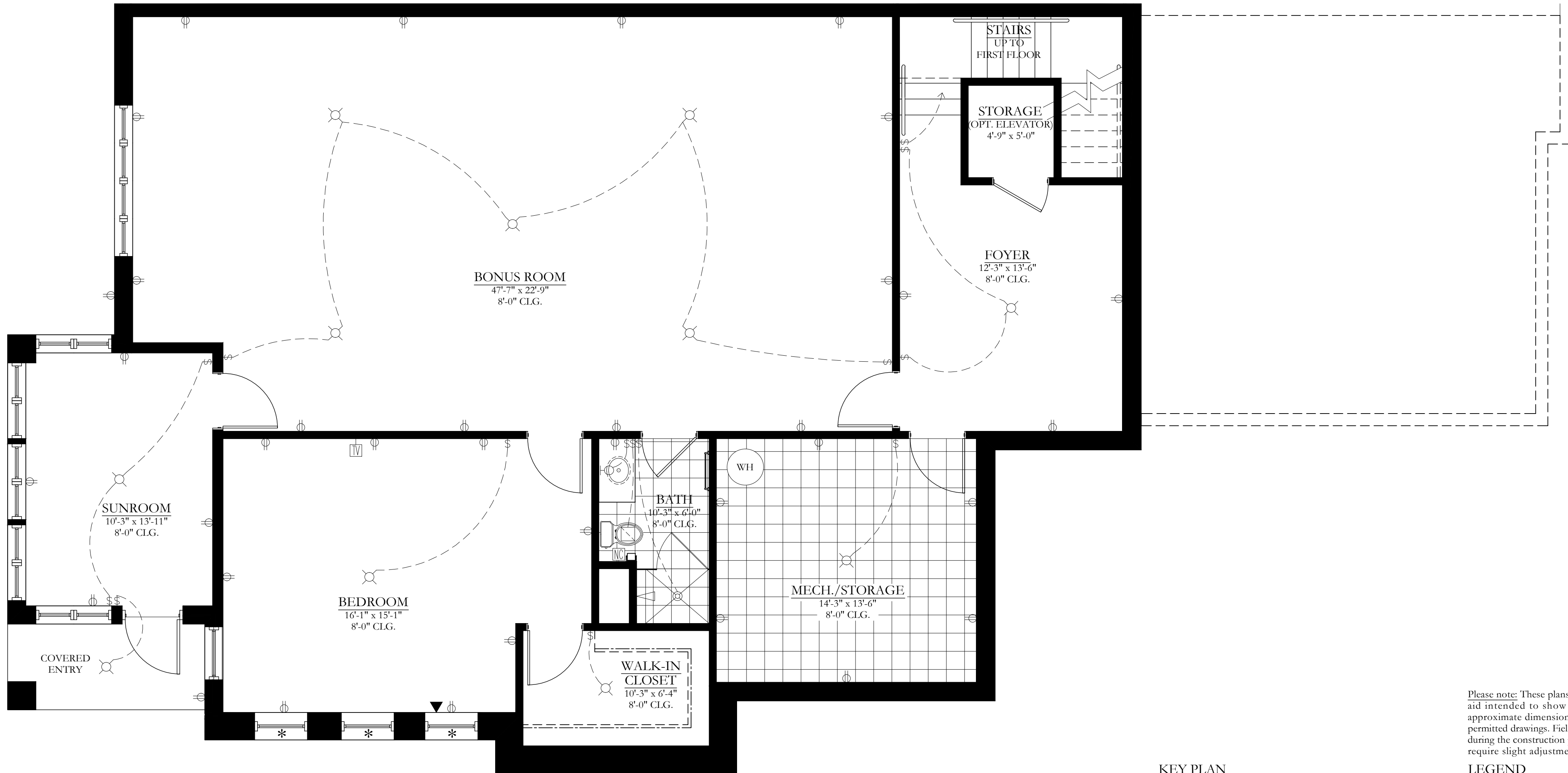
- * 6'-0" Sill Height
- \$ Light Switch
- \$\$ Dimmer Light Switch
- ⊕ Electrical Outlet
- ⊖ Electrical Circuiting
- ☎ Telephone Outlet
- TV Television Outlet
- NC Nurse Call Station
- EF Exhaust Fan
- DB Doorbell
- CHIME Doorbell Chimes
- TL Wall Mounted Light
- Recessed Light
- ◐ Recessed Directional Light
- ☼ Ceiling Mounted Light
- ⊙ Pendant Light
- ⊞ Junction Box
- Fluorescent Light



The Murgese III - First Floor

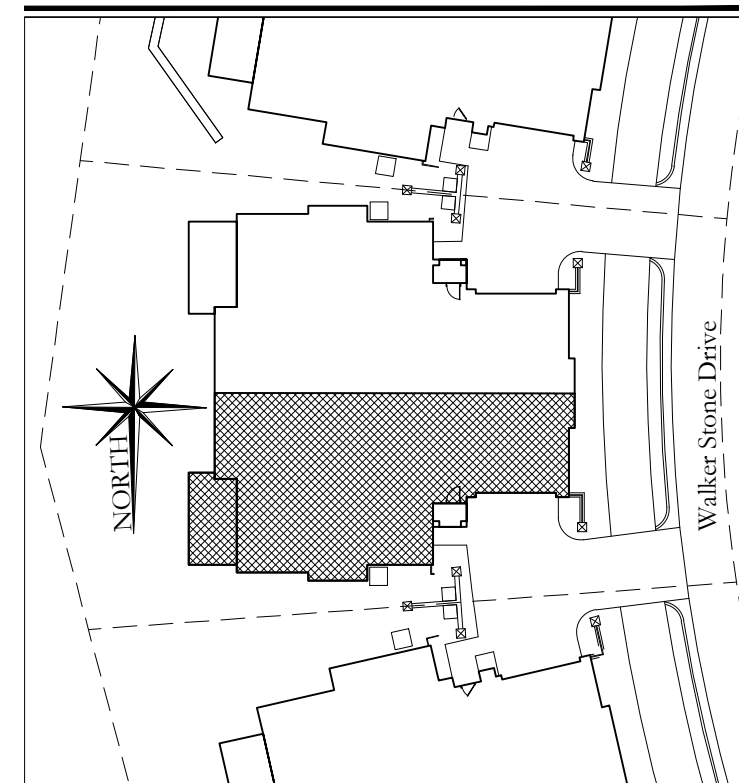
828 Walker Stone Drive
#42 Creekside Estates





Please note: These plans are a visual aid intended to show layout and approximate dimensions, based on permitted drawings. Field conditions during the construction process may require slight adjustment to plans.

KEY PLAN



LEGEND

- * 6'-0" Sill Height
- \$ Light Switch
- \$\$ Dimmer Light Switch
- ⊕ Electrical Outlet
- ⊕ Electrical Circuiting
- ▼ Telephone Outlet
- TV Television Outlet
- NC Nurse Call Station
- EF Exhaust Fan
- DB Doorbell
- CHIME Doorbell Chimes
- TL Wall Mounted Light
- Recessed Light
- Recessed Directional Light
- Ceiling Mounted Light
- Pendant Light
- ⊕ Junction Box
- Fluorescent Light



The Murgese III - Basement

828 Walker Stone Drive
#42 Creekside Estates

